

This email is intended for eligible employees and members of organizations participating in the Dell EPP. If you are not an eligible employee or member, or do not wish to receive this email, please notify the Dell EPP coordinator at your organization.

## The Dell EPP Exclusive Monthly Member Flyer

VALID JULY 1<sup>ST</sup> - JULY 31<sup>TH</sup>, 2006

Member ID: US25915833

# SCHOOL STARTS SOON. SAVINGS START NOW.

GET EXCLUSIVE EPP BACK-TO-SCHOOL SAVINGS  
OF OVER \$400 ON SELECT SYSTEM PURCHASES.

YOUR BEST DEAL ON  
A DELL HOME PC.!

**EPP  
EXCLUSIVE  
SAVINGS**

## Member Deals of the Month

### Dimension™ E310 Desktop Entry Entertainment PC

**SAVE \$424**

- Intel® Pentium® 4 Processor 521 with HT Technology (2.80GHz, 1MB L2 Cache, 800MHz FSB)
- Genuine Windows® XP Media Center Edition 2005
- 512MB Shared<sup>2</sup> Dual Channel<sup>3</sup> DDR2 SDRAM at 533MHz
- 80GB<sup>4</sup> SATA Hard Drive (7200 RPM)
- 15" E156FP Flat Panel Display
- Intel® Graphics Media Accelerator 900
- 48X CD Burner/DVD Combo Drive
- Dell A525 30 Watt Stereo Speakers with Subwoofer
- 24 Month Subscription to McAfee® SecurityCenter™<sup>5</sup>
- Microsoft® Works Suite 2006
- 2-Yr Limited Warranty<sup>6</sup>, 2-Yr At-Home Service<sup>7</sup>, 2-Yr Hardware Warranty Support

\$1,006 Regular Price

**EPP Exclusive Savings<sup>10</sup>**  
Offer ends 7/31/06 or after  
5,000 systems are sold of  
each order code

- \$400

- \$24 4% EPP Member Discount

**\$582 Discounted Price**

### Inspiron™ E1505 Notebook Versatile and Powerful

**SAVE \$341**

- Intel® Core™ Duo Processor T2300E (1.66GHz, 667 FSB, 2MB L2 Cache)
- Genuine Windows® XP Media Center Edition 2005
- 15.4" Widescreen XGA TFT Display with TrueLife™
- 512MB Shared<sup>6</sup> DDR2 SDRAM at 533MHz
- 60GB<sup>4</sup> SATA Hard Drive
- 24X CD Burner/DVD Combo Drive
- 128MB ATI Mobility™ Radeon® X1300 HyperMemory<sup>9</sup>
- 53Whr Lithium Ion Battery (6 cell)
- Intel® PRO/Wireless 3945 Internal Wireless (802.11 a/g)
- 15 Month Subscription to McAfee® SecurityCenter™<sup>5</sup>
- 2-Yr Limited Warranty<sup>6</sup>, 2-Yr At-Home Service<sup>7</sup>, 2-Yr Hardware Warranty Support

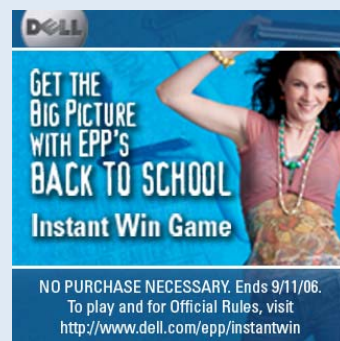
\$1,320 Regular Price

**EPP Exclusive Savings<sup>10</sup>**  
Offer ends 7/31/06 or after  
5,000 systems are sold of  
each order code

- \$300

- \$41 4% EPP Member Discount

**\$979 Discounted Price**



### Get the Big Picture with EPP's Back to School Instant Win Game

We're giving away one Dell 37" LCD TV everyday! To play & for official rules go to [dell.com/ep/instantwin](http://dell.com/ep/instantwin).

### FREE 3-5 Day Shipping and Handling

on select systems purchased online<sup>13</sup>!

### No Interest Until 2007#

For best-qualified customers†.  
Offer valid 6/29/06-8/2/06



Visit [www.dell.com/ep/flyer](http://www.dell.com/ep/flyer) or call 1-877-289-9437

Member ID: US25915833

See page 2 for important details.

# Featured Electronics And Accessories



## Netgear 108Mbps<sup>11</sup> RangeMax Firewall Wireless Router

This high-speed wireless device adjusts to interference and physical barriers in your home, and delivers up to 500,000 square feet<sup>12</sup> of coverage. Dell Part: A0458704

**\$100**



## Visioneer DocuMate 152 Workgroup Document Scanner

Offers 600-dpi optical resolution with dual-CCD scanning array that captures minute details and offers enhanced efficiency with a 50-page automatic document feeder. Dell Part: A0641977

**\$595**



## Pinnacle Dazzle USB 2.0 DVD Recorder

A plug-and-play USB 2.0 device that allows you to easily capture your home videos and TV recordings directly to DVD via VCRs, camcorders or other video equipment. Dell Part: A0638312

**\$53**



## Dell™ Photo All-in-One 924 Printer

3 devices in one - printing speeds of up to 20 ppm\* in black and 16 ppm\* in color, 48-bit scanning, and photocopying. Dell Part: 924STD

**\$89**

*\*Actual print speeds will vary with use.*

## FREE 3-5 Day Shipping and Handling

on all electronics and accessories orders over \$49 (before tax and fees)<sup>14</sup>

## Dare to Compare

**Before you go to a retail store, shop Dell.**

We have thousands of Consumer Electronic products – all at highly competitive prices.



Visit [www.dell.com/ep/flyer](http://www.dell.com/ep/flyer) or call 1-877-289-9437

Member ID: US25915833

† **DELL PREFERRED ACCOUNT(DPA)**: Offered by CIT Bank to qualified U.S. residents with approved credit. Creditworthiness determined by lender. Taxes, fees, shipping, handling, and any other applicable charges are extra, and vary. Monthly payments based on pre-rebate price. Minimum monthly payments of \$15 or 3% of account balance, whichever is greater. Qualifying for the Dell Preferred Account does not guarantee eligibility for No Interest or other promotional financing features. Qualifications vary by promotion.

**#NO INTEREST UNTIL 2007 PROMOTIONAL FEATURE: FOR BEST- QUALIFIED DPA CUSTOMERS**, as determined by lender. Available on purchases made from 06/29/2006 through 08/02/2006. Interest accrues during the promotional period and will be added to your account if balance not paid by 01/01/2007. Minimum monthly payments are required. For accounts not paid in full by 01/01/2007, account balance and new purchases will be subject to the Standard Rate (18.24% - 29.99% variable APR, which can increase or decrease, as of 06/30/2006, depending on creditworthiness).

ALL ORDERS ARE SUBJECT TO APPROVAL AND ACCEPTANCE BY DELL. Offer subject to your employer's continuing participation in the Dell EPP. Pricing, specifications, availability and terms of offers may change without notice. Taxes, fees, shipping, handling (other than systems free 3-5 day shipping and handling offer and electronics and accessories free 3-5 day shipping offer, if applicable) and any applicable restocking charges are extra, and vary. Offers may be combined with other select offers or discounts. Valid for U.S. Dell EPP new purchases only. Free shipping offers available in Continental (except Alaska) U.S. only. Electronics and accessories purchases not included in systems free shipping and handling offer. Dell cannot be responsible for pricing or other errors, and reserves the right to cancel orders arising from such errors.

1. EPP discounts taken on top of most generally advertised Dell Home Sales prices and promotions (some Home and Home Office special offers and coupons may be excluded). For comparative purposes only. Employee Purchase Program (Dell Marketing, LP) not associated with Dell Home Sales (Dell Catalog Sales, LP).
2. Up to 128MB of system memory may be allocated to support graphics, depending on system memory size and other factors.
3. Dual-channel memory requires 2 each of the same capacity memory DIMMs.
4. For hard drives, GB means 1 billion bytes; actual capacity varies with preloaded material and operating environment and will be less. On Dimension, XPS, and Inspiron systems, for Norton Ghost 10 and Dell DataSafe users, up to 25% of the stated hard drive capacity may be utilized by your system as dedicated backup space.
5. Standard subscription is for 12 months. This 24 month offer allows you to take full advantage of the free 90 day trial period that comes standard with your system purchase. This offer is only available when purchased at point of sale and is not available after you receive your system.
6. For a copy of our guarantees or limited warranties, please write Dell USA L.P., Attn: Warranties, One Dell Way, Round Rock, TX 78682. For more information, visit <http://www.dell.com/warranty>.
7. At-home service provided via third-party contract with customer. Technician will be dispatched if necessary following phone-based troubleshooting. Availability varies. Other conditions apply.
8. Between 128 and 224MB of shared system memory may be allocated to support graphics, depending on system memory size and other factors.
9. The total of local and shared system memory used by this graphics card is up to 128MB. Local on-board memory is 64MB. Up to 64MB of system memory may be allocated to support graphics, depending on system memory size and other factors.
10. Offer valid 7/1/06 - 7/31/06 or when 5,000 systems are sold of each order code. Offer available on specially configured Dimension E310 and Inspiron E1505 order codes ending in JULY. Offer not combinable with other instant savings, percent off, mail-in rebate promotions or coupon offers. Valid only for EPP members and not for resellers and/or online auctions.
11. Wireless Transmission Speeds: Speed references for comparative purposes only. Actual speed varies with environment, equipment, and other factors, and will be less. Range may vary due to number of users, interference and transmission barriers, such as walls and building material.
12. Wireless Range: range may vary due to number of users, interference, transmission barriers (such as walls and building material), and other factors.
13. Offer ends 8/2/2006. Free shipping and handling applies to systems only. Free 3-5 Day Shipping and free Handling on all Dimension E310 and E510 systems and all Inspiron E1405, E1705, E1505 and 710m systems. Free 3-5 day shipping offers available in Continental (except Alaska) U.S. only.
14. Offer ends 8/2/2006. This offer cannot be applied to systems and does not apply to Electronics and Accessories purchased with systems. Free shipping offers available in Continental (except Alaska) U.S. only.

Dell, the Dell Logo, Dimension and Inspiron are trademarks of Dell Inc. Intel and Pentium are registered trademarks of Intel Corporation. Microsoft and Windows are registered trademarks of Microsoft Corporation. Other trademarks and trade names may be used in this document to refer to either the entities claiming the marks and names or their products. Dell disclaims proprietary interest in the marks and names of others. © 2006 Dell Inc. All rights reserved. Reproduction or translation of any part of this work beyond that permitted by U.S. copyright laws without the written permission of Dell Inc. is unlawful and strictly forbidden. Dell EPP Marketing, One Dell Way, Mailstop RR3-54, Round Rock, TX 78682.